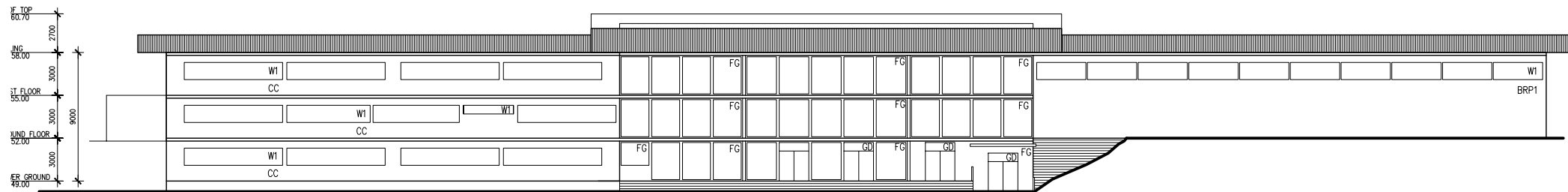


SOUTH-EAST ELEVATION



NORTH-WEST ELEVATION

**AREA CALCULATION:**

TOTAL STAGE 8 SITE AREA : 19,114.41 m<sup>2</sup>

BUILDING FOOTPRINT AREA : 3,054.00 m<sup>2</sup>

GROSS FLOOR AREA : 5,795.00 m<sup>2</sup>

LANDSCAPED AREA : 15,190.50 m<sup>2</sup>

NUMBER OF STOREYS : 2 STOREYS

NUMBER OF CAR PARKING SPACES : 50 CARS

**COMPARISON OF NUMBERS**

STUDENTS : 360

CLASSROOMS : 12 (each 55.40 m2)

LABORATORIES : 4 (each 63.20 m2)

- EXTERNAL LEGEND**
- CC COMPOSITE CLADDING
  - CB1 COMPOSITE BALUSTRADE (LIGHT GRAY)
  - CB2 COMPOSITE BALUSTRADE (WHITE)
  - W1 WINDOW
  - FG FIXED GLAZED
  - GD GLAZED DOOR
  - CBR COLORBOND ROOF
  - BRP1 BRICK VENEER RENDERED+ PAINTED LIGHT GRAY
  - TC TIMBER CLADDING
  - L1 LOUVRE SCREEN
  - AW AWNING
  - GD GLAZED DOOR
  - BRP2 BRICK VENEER RENDERED+ PAINTED P11B1 (BEIGE)
  - BRP3 BRICK VENEER RENDERED+ PAINTED DARK GRAY
  - SD SOLID DOOR
  - BRP4 BRICK VENEER RENDERED+ PAINTED WHITE

